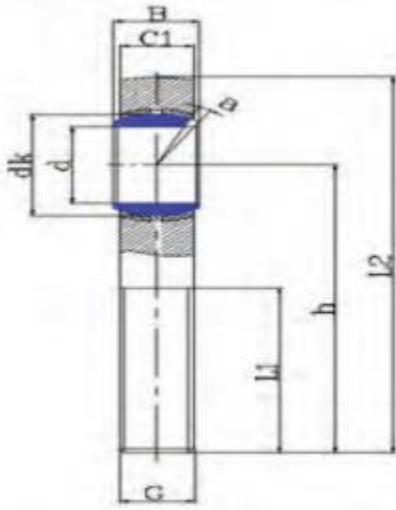
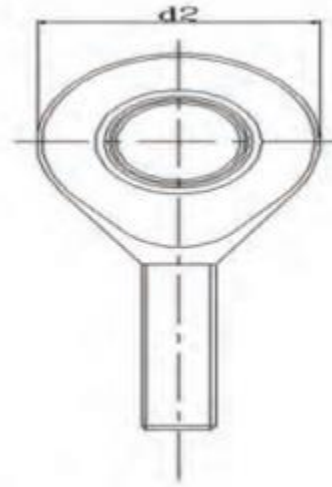


# Imperial Male Rod End Product Dimension



POSB



	d	B	dk	C1	d2	G	h	L3	L4	L5	W	d3	d4	a	Dynami c (kN)	Static (kN)	Weight (kgs)
POSB3	4.826	7.93	11.1	6.35	15.88	10-32	26.97	19.05	39.7	10	3.4	3.8	0.013	10	3.4	4.6	0.015
POSB4	6.35	9.53	12.7	7.14	19.05	1/4-28	33.32	25.4	49.2	13	4.5	6.6	0.022	13	4.5	7.7	0.025
POSB5	7.938	11.1	15.88	8.74	22.23	5/16-24	34.93	31.75	58.72	10	6.9	8.4	0.037	10	6.9	8.4	0.036
POSB6	9.525	12.7	18.26	10.31	25.4	3/8-24	41.28	31.75	61.93	9	9.4	10	0.055	9	9.4	10	0.061
POSB7	11.113	14.28	20.62	11.1	28.58	7/16-20	46.02	34.93	68.28	11	11	13	0.078	11	11	13	0.081
POSB8	12.7	15.88	23.81	12.7	33.32	1/2-20	53.98	38.1	78.59	9	15	19	0.12	9	15	19	0.133
POSB10	15.875	19.05	28.58	14.27	38.1	5/8-18	63.5	41.28	85.73	11	20	21	0.18	11	20	21	0.19
POSB12	19.05	22.23	33.32	17.45	44.45	3/4-16	73.03	44.45	95.25	10	29	29	0.29	10	29	29	0.285
POSB16	25.4	34.93	47.63	25.4	69.85	5/4-12	104.78	53.98	139.7	14	60	101	1.1	14	60	101	1