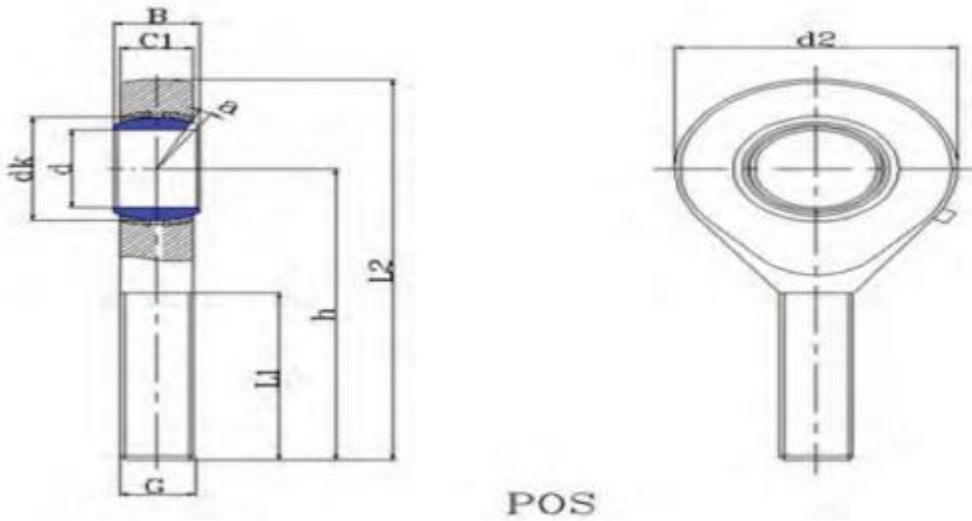


# Metric Male Rod End Product Dimension



	d	B	dk	C1	d2	G	h	L3	L4	L5	W	d3	d4	a	Dynamic (kN)	Static (kN)	Weight (kgs)
POS3	3	6	7.93	4.5	14	M3*0.5	27	15	34	14	1.8	3.1	0.008	14	1.8	3.7	0.008
POS4	4	7	9.53	5.3	16	M4*0.7	17	17	38	13	2.5	4.3	0.011	13	2.5	4.6	0.013
POS5	5	8	11.11	6	16	M5*0.8	33	20	41	13	3.3	5.7	0.013	13	3.3	5.7	0.016
POS6	6	9	12.7	6.75	18	M6*1.0	36	22	45	13	4.3	7.2	0.02	13	4.3	7.2	0.022
POS8	8	12	15.88	9	22	M8*1.25	42	25	53	14	7.2	11.6	0.03	14	7.2	11.6	0.047
POS10	10	14	19.05	10.5	26	M10*1.5	48	29	61	13	10	14.5	0.055	13	10	14.5	0.077
POS12	12	16	22.23	12	30	M12*1.75	54	33	69	13	13.4	17	0.085	13	10	14.5	0.077
POS14	14	19	25.4	13.5	34	M14*2.0	60	36	77	16	17	24	0.14	13	13.4	17	0.1
POS16	16	21	28.58	15	40	M16*2.0	66	40	86	15	21.6	28.5	0.21	13	13.4	17	0.1
POS18	18	23	31.75	16.5	44	M18*1.5	72	44	94	15	26	42.5	0.28	16	17	24	0.16
POS20	20	25	34.93	18	50	M20*1.5	78	47	103	14	31.5	52.5	0.38	16	17	24	0.16
POS22	22	28	38.1	20	54	M22*1.5	84	51	111	15	38	57	0.48	15	21.6	28.5	0.22
POS25	25	31	42.85	22	60	M24*2.0	94	57	124	15	47.5	68	0.64	15	21.6	28.5	0.22