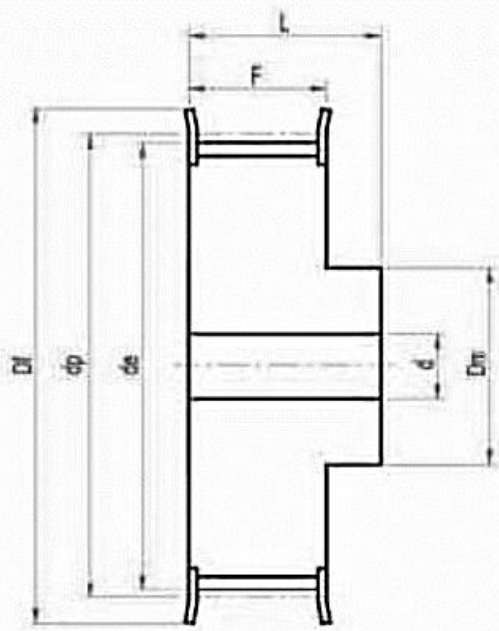
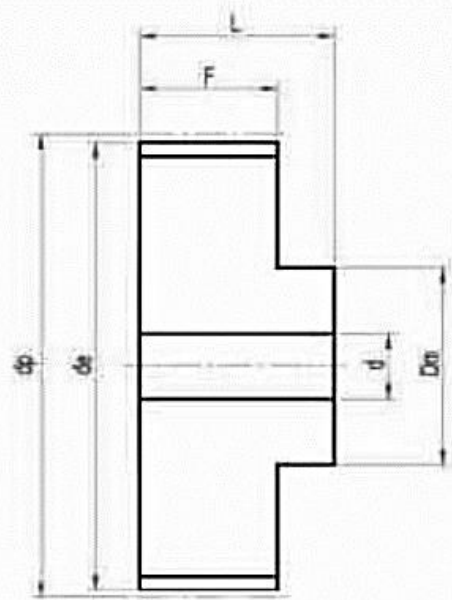


5M HTD Timing Pulley (Pilot bore)



2F



2

Part No.	Type	Material	Z	dp	de	Df	Dm	F	L	d	Flange	KG
12-5M-9PB	2F	St	12	19.1	17.96	23	12.5	14.5	20	6	202	0.03
12-5M-15PB	2F	St	12	19.1	17.96	23	12.5	20.5	26	6	202	0.03
12-5M-25PB	2F	St	12	19.1	17.96	23	12.5	30.5	36	6	202	0.05
14-5M-9PB	2F	St	14	22.28	21.14	25	13.5	14.5	20	6	203	0.04
14-5M-15PB	2F	St	14	22.28	21.14	25	13.5	20.5	26	6	203	0.04
14-5M-25PB	2F	St	14	22.28	21.14	25	13.5	30.5	36	6	203	0.08
15-5M-9PB	2F	St	15	23.87	22.73	28	16	14.5	20	6	204	0.05
15-5M-15PB	2F	St	15	23.87	22.73	28	16	20.5	26	6	204	0.05
15-5M-25PB	2F	St	15	23.87	22.73	28	16	30.5	36	6	204	0.09
16-5M-9PB	2F	St	16	25.46	24.32	28	16.5	14.5	20	6	204	0.06
16-5M-15PB	2F	St	16	25.46	24.32	28	16.5	20.5	26	6	204	0.06
16-5M-25PB	2F	St	16	25.46	24.32	28	16.5	30.5	36	6	204	0.11
18-5M-9PB	2F	St	18	28.65	27.51	32	20	14.5	20	6	205	0.07
18-5M-15PB	2F	St	18	28.65	27.51	32	20	20.5	26	6	205	0.09
18-5M-25PB	2F	St	18	28.65	27.51	32	20	30.5	36	6	205	0.13
20-5M-9PB	2F	St	20	31.83	30.69	36	23	14.5	22.5	6	206	0.1
20-5M-15PB	2F	St	20	31.83	30.69	36	23	20.5	26	6	206	0.12
20-5M-25PB	2F	St	20	31.83	30.69	36	23	30.5	38	6	206	0.17
21-5M-9PB	2F	St	21	33.42	32.28	38	24	14.5	22.5	6	207	0.12
21-5M-15PB	2F	St	21	33.42	32.28	38	24	20.5	26	6	207	0.14
21-5M-25PB	2F	St	21	33.42	32.28	38	24	30.5	38	6	207	0.2
22-5M-9PB	2F	St	22	35.01	33.87	38	25.5	14.5	22.5	6	207	0.13
22-5M-15PB	2F	St	22	35.01	33.87	38	25.5	20.5	26	6	207	0.15
22-5M-25PB	2F	St	22	35.01	33.87	38	25.5	30.5	38	6	207	0.22

5M HTD Timing Pulley (Pilot bore)



Part No.	Type	Material	Z	dp	de	Df	Dm	F	L	d	Flange	KG
24-5M-9PB	2F	St	24	38.2	37.06	42	27	14.5	22.5	6	208	0.15
24-5M-15PB	2F	St	24	38.2	37.06	42	27	20.5	26	6	208	0.19
24-5M-25PB	2F	St	24	38.2	37.06	42	27	30.5	38	6	208	0.26
26-5M-9PB	2F	St	26	41.38	40.24	44	30	14.5	22.5	6	209	0.18
26-5M-15PB	2F	St	26	41.38	40.24	44	30	20.5	28	6	209	0.23
26-5M-25PB	2F	St	26	41.38	40.24	44	30	30.5	38	6	209	0.32
28-5M-9PB	2F	St	28	44.56	43.42	48	30.5	14.5	22.5	6	210	0.21
28-5M-15PB	2F	St	28	44.56	43.42	48	30.5	20.5	28	6	210	0.26
28-5M-25PB	2F	St	28	44.56	43.42	48	30.5	30.5	38	6	210	0.37
30-5M-9PB	2F	St	30	47.75	46.6	51	35	14.5	22.5	6	211	0.25
30-5M-15PB	2F	St	30	47.75	46.6	51	35	20.5	28	6	211	0.32
30-5M-25PB	2F	St	30	47.75	46.6	51	35	30.5	38	6	211	0.44
32-5M-9PB	2F	St	32	50.93	49.79	54	38	14.5	22.5	8	212	0.28
32-5M-15PB	2F	St	32	50.93	49.79	54	38	20.5	28	8	212	0.35
32-5M-25PB	2F	St	32	50.93	49.79	54	38	30.5	38	8	212	0.48
36-5M-9PB	2F	St	36	57.3	56.16	60	38	14.5	22.5	8	214	0.33
36-5M-15PB	2F	St	36	57.3	56.16	60	38	20.5	28	8	214	0.43
36-5M-25PB	2F	St	36	57.3	56.16	60	38	30.5	38	8	214	0.59
40-5M-9PB	2F	St	40	63.66	62.52	71	38	14.5	22.5	8	217	0.42
40-5M-15PB	2F	St	40	63.66	62.52	71	38	20.5	28	8	217	0.52
40-5M-25PB	2F	St	40	63.66	62.52	71	38	30.5	38	8	217	0.75
44-5M-9PB	2	Al	44	70.03	68.89	-	38	14.5	25.5	8	-	0.17
44-5M-15PB	2	Al	44	70.03	68.89	-	38	20.5	30	8	-	0.23
44-5M-25PB	2	Al	44	70.03	68.89	-	38	30.5	40	8	-	0.32
48-5M-9PB	2	Al	48	76.39	75.25	-	45	14.5	25.5	8	-	0.18
48-5M-15PB	2	Al	48	76.39	75.25	-	38	20.5	30	8	-	0.29
48-5M-25PB	2	Al	48	76.39	75.25	-	38	30.5	40	8	-	0.28
60-5M-9PB	2	Al	60	95.49	94.35	-	45	14.5	25.5	8	-	0.23
60-5M-15PB	2	Al	60	95.49	94.35	-	50	20.5	30	8	-	0.3
60-5M-25PB	2	Al	60	95.49	94.35	-	50	30.5	40	8	-	0.44
72-5M-9PB	2	Al	72	114.59	113.45	-	45	14.5	25.5	8	-	0.42
72-5M-15PB	2	Al	72	114.59	113.45	-	50	20.5	30	8	-	0.59
72-5M-25PB	2	Al	72	114.59	113.45	-	50	30.5	40	8	-	0.85